



**TESHIMA**  
ESPOIR PARK

A Guide to  
Teshima Espoir Park

---

Teshima is a small island in the Seto Inland Sea.

Teshima Espoir Park is a place filled with hope, where people gather, connect, envision the future, and grow.

We hope that you will spend a rich and peaceful time here, enjoying all that Teshima has to offer.

-Teshima Espoir Park Team



## Teshima Esplor Park: lodging, events, and training

In 2022 Fall, we opened Teshima Esplor Park, a complex facility for lodging, events, and training in Teshima, Kagawa Prefecture.

It combines lodging facilities and rental spaces for training and events that can be used by both individuals and groups.

The name "Esplor Park" embodies our hope that these facilities will be a place filled with hope, where visitors can gather, connect, envision the future, and grow.

Teshima, an island in the Seto Inland Sea, is dotted with artwork that connects the island to the world while preserving the rich natural landscape of Japan.

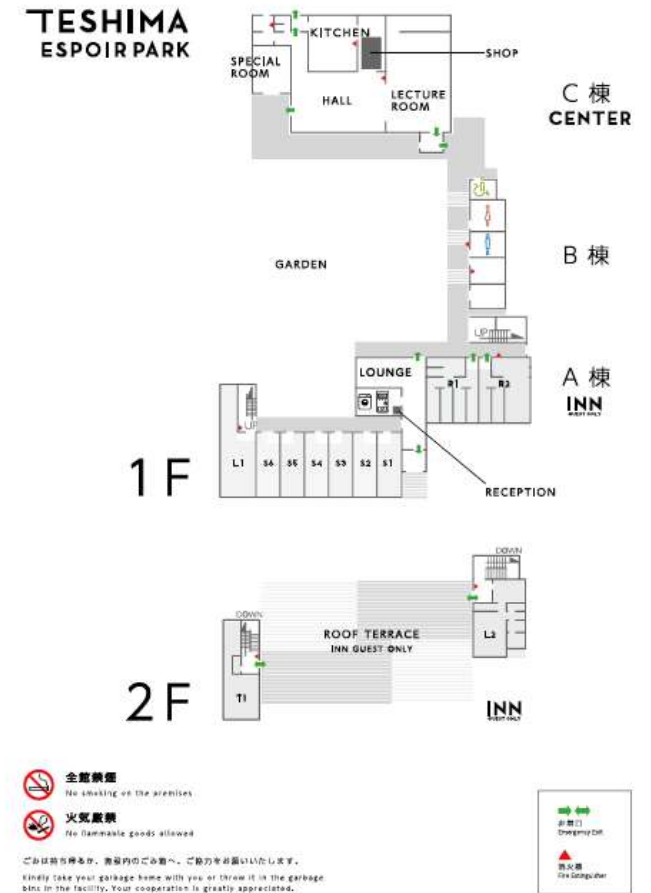
We offer a space where you can enjoy an enriching experience of Teshima at its finest.





## Teshima Esplor Park

The park is comprised of three buildings: Esplor Inn (lodging building), Esplor Center (training building), and Corridor Building.



---

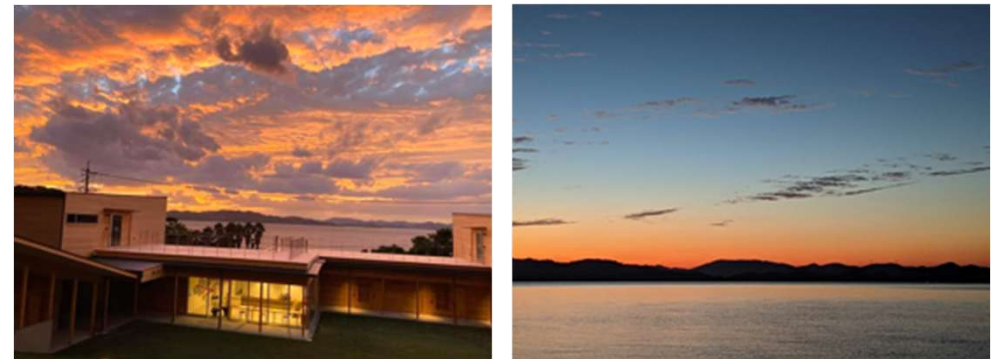
## The Warmth of Wood

Teshima Espoir Park is built of wood so that our facilities blend in with the nature of Teshima. The wood is from Nishiawakura Village in the northernmost part of Okayama Prefecture, which is also where the headwaters of the Seto Inland Sea are. Teshima Espoir Park is comprised of trees that have been nurtured for 50-70 years. We believe that cleaning up the headwaters of the river will lead to the preservation and sustainability of the environment. The selection of materials is also important to us. Visitors can relax and enjoy the aroma and warmth of the wood when they stay with us. In Nishiawakura Village, the "*Hyakunen-no Shinrin Koso*" (100-year forest concept) is the mainstay of the village's sustainable development, which is based on the circulation of various natural capitals such as renewable energy and business.



## Ocean, Mountains, Sky

Not only does every room have an ocean view, but you can also see the ocean, mountains, and sky from the functional and beautiful kitchen area. Especially at sunset, the gradation of colors in the sky is a sight to behold. Please relax and enjoy being surrounded by nature that changes its expression with each season.







## Teshima

Teshima is an island in the Seto Inland Sea. Located between Kagawa and Okayama prefectures, the island has an area of about 14.5 km<sup>2</sup> and a population of about 760 people. Mt. Dan, which rises 330 meters above sea level in the center of the island, purifies stored rainwater and delivers it as delicious drinking water to the villages at the foot of the island. Illegal dumping of industrial waste, which began in the 1970s, was one of the largest industrial waste problems in Japan, but progress has been made in disposal, and efforts to restore the environment are ongoing. In 2010, the Teshima Art Museum and other contemporary art facilities were built, attracting many visitors from around the world. The island's abundant nature and art, and an island free of traffic lights, convenience stores, and supermarkets, attracts visitors from all over the world.

### Terrace Rice Fields

Thanks to the abundance of water, rice cultivation has always flourished here, and rice paddies and former rice paddies can be seen throughout the island. Across from the Teshima Art Museum are terraced rice paddies overlooking the sea.



### Art

Every three years, the Setouchi Triennale is held. This contemporary art festival is held on the islands of the Seto Inland Sea. Many people from all over the world visit the festival. Teshima is easily accessible to Naoshima, Shodoshima, and Inujima.



### Products



- Olives  
Olives are the prefectural tree of Kagawa Prefecture. There are olive trees in various locations, and the harvested fruit is used to make oil, processed products, and fresh pickles.
- Lemons  
Lemons are also widely cultivated. The branches and leaves give off a fresh aroma. The lemons are processed into various products and are also used for cooking.
- Strawberries  
*Nyoho* strawberries are produced in greenhouses with a perfect balance of sweet and sour. There is also a directly managed cafe on the island.
- Citrus fruits  
You can enjoy many kinds of citrus fruits such as mandarin oranges and sweet springs.

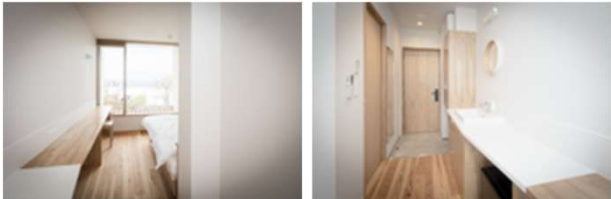
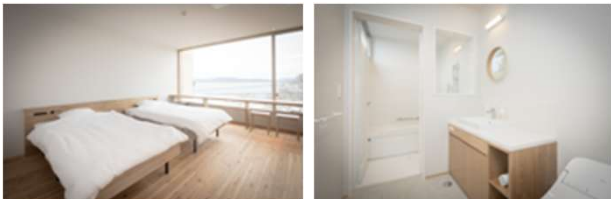

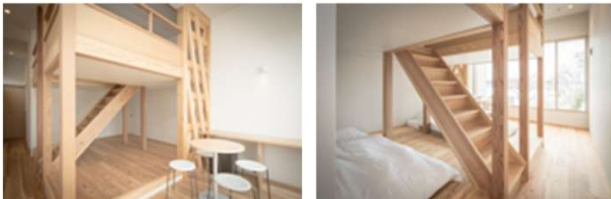

### Stone Island

Teshima Island produces tuff called *Teshima-ishi*, and has long been known as an island of stones. Teshima stone is soft and easy to work with, but is highly resistant to fire, and is used for lanterns, torii (gateways to shrines), etc.

## Espoir Inn (lodging) 11 rooms, 22 guests

\*smoking is prohibited on all premises

All rooms have a view of the ocean. Relax, enjoy the warmth of wood, and experience the ocean and mountains. Enjoy a relaxing and luxurious stay.

 <p>Single Room 6 Rooms 13.8㎡ Cap. 1 guest ¥13,000~/Room</p> <p>This simple room is great for workations or visiting for island tours. Enjoy a moment of peace and quiet as you watch the fishing boats passing by on the Seto Inland Sea from bed.</p> <p>1 semidouble bed, shower, toilet, washbasin</p>	 <p>Twin Room 1 Room 26.9㎡ Cap. 1-2 guests ¥35,000~/Room</p> <p>The view of the Seto Inland Sea from the second floor and the mountain view that can be enjoyed while bathing make this a popular room to spend a relaxing time in.</p> <p>2 semidouble beds, bath, toilet, washbasin</p>	 <p>Double Room 2 Rooms 30.6㎡ Cap. 1-3 guests ¥30,000~/Room</p> <p>This room includes a bedroom with a double bed and a traditional Japanese-style tatami living room.</p> <p>1 double bed/1 extra bedding (tatami room), shower, toilet, washbasin</p>
 <p>Loft Room 1F 1 Room 36.2㎡ Cap. 1-4 guests ¥50,000~/Room</p> <p>Unique room with a loft bed. Recommended for families and groups.</p> <p>4 single beds, bath, toilet, washbasin</p>	 <p>Loft Room 2F 1 Room 47.8㎡ Cap. 1-4 guests ¥60,000~/Room</p> <p>Includes a large Western-style room and a private tatami room. The Western-style room is also equipped with a loft space and a sofa. Enjoy a healing bath with an ocean view.</p> <p>Bedding for 3 in the loft space, bedding for 1 in the tatami room, bath, toilet, washbasin</p>	<p>■Other equipments Wi-fi/AC/electric kettle/hair dryer</p> <p>■Amenities Shampoo/conditioner/body soap/towels/sleepwear/slippers</p> <p>Other than the above amenities, environmentally friendly amenities are available for sale. No free amenities are provided. Please bring your own toiletries, or purchase on site.</p> <p>■Payment Advance payment by credit card</p> <p>■ Check-in/16:00~18:00 Check-out/10:00</p>

## Espoir Center (Training Center)

A place to enjoy food, socialize, and learn. A functional and beautiful kitchen is located in the center of this building. Various spaces are available for groups to rent.



**Hall** 130m<sup>2</sup>/for lectures, training sessions, events, etc./please inquire for maximum capacity/¥50,000 (3hrs~)

The Hall can be used for various purposes such as dining and events. \*The Hall is usually open to the general public. Breakfast and dinner can be enjoyed here.



**Special Room** 19m<sup>2</sup>/for private dining, training, or as additional office space/cap. ~8 people/¥20,000 (3hrs~)

This room can be used for private dining, training, or as additional office space.



**Kitchen (Professional-grade)** 29m<sup>2</sup>/for cooking classes and restaurant events/please inquire for maximum capacity/cooking facilities, cooking tools and tableware/¥30,000 (3hrs~)

The kitchen is available for rental for cooking classes and restaurant events. It includes a beverage corner, high heat cooktop, oven, convection oven, etc.



**Garden** Lawn, resting area/available only to facility users, free of charge

A lawn garden stretches between Espoir Inn and Espoir Center. It is open to all guests using the facility (No flammables allowed).



**Entire Building** 178m<sup>2</sup>/for lectures, training sessions, events, etc./please inquire for maximum capacity/whole facility rental ¥100,000~/\*please inquire for details

The entire building is available for rental. Group reservations are accepted regardless of business holidays. For more details, please inquire us.

### ■Optional

Mic and projector rental | 5,000 yen  
Bottomless Coffee Service | 1,000 yen/person  
Extended hours (21:00-24:00) | 10,000 yen/hour

### ■For bookings and inquiries

- Bookings are possible 1 year prior to the desired day of the use  
- For further details and inquiries, please check our website and contact through the inquiry form

### ■Discounts

Teshima Resident Discount 50% off  
\*50% discount is applied to space rental from the listed price, if more than half of the group is Teshima residents.

\*all prices listed includes tax



## Other facilities/services



### Rooftop Terrace

A cypress deck stretches across the rooftop of Esplor Inn. Overlooking the Seto Inland Sea, you can enjoy the sunset, night sky, or fresh morning air. It is free of charge for facility users.



### Vending Machines

Vending machines are available at the vending machine corner next to the entrance hall of Esplor Inn. One for soft drinks and one for alcoholic beverages are available.



### Amenities/Laundry

Environmentally friendly amenities are available for sale. No free amenities are provided. Please bring your own toiletries, or purchase on site. A fully automated washer/dryer is available for use.

## For dining

Dinner and breakfast are not included in our accommodation plans. We encourage you to use the restaurants on the island. We recommend that you check the opening days and hours and make reservations in advance.

We also encourage you to visit the Italian restaurant "Umi no Restaurant" located in front of Esplor Park. It offers an Italian cuisine course during dinner hours (reservations required).

<https://il-grano.jp/umi/en/index.php>



The shop located in our facility offers a variety of frozen and ready-to-eat packed meals that are highly regarded from the perspective of food loss reduction. Unique and high quality foods and drinks from all over Japan and the local Setouchi area are available.

Shop opening hours: 7:30~21:00

Guests may bring their own meals and eat them in the cafeteria. Free coffee is available at breakfast.

## Options at Espoir



### Training

We accept not only overnight training but also one-day training sessions. Day-use by local residents is also welcome.



### Overnight Retreats

Our facilities can be used for overnight retreats, training, research, fieldwork, etc. An overnight stay with us may provide stimulus and inspiration for your team.



### Rental Meeting Space

A great space for people who want a change of scenery or need a space to meet with clients outside of the office.



### Classroom or Exhibit Space

This space can be freely laid out and used as an event space for various classes, exhibitions, etc.



### Various Events

This space can be used as a venue for various events such as dining events, festivals, music & arts, etc.

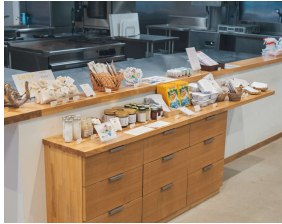


### Custom Events

Our team can work with you to create a training program on a theme of your choice, such as art, architecture, or the history of the island. Please contact us for more information.

\*This is an example and is subject to change/availability.

## Sample Meals



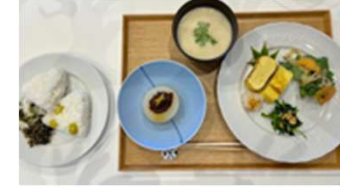
Shop (at Espoir Center)

We have a lineup of products that align with our values; select foods from the Setouchi area and across Japan that can be easily prepared in a microwave. We hope that visitors will learn about our local foods and make new connections.



Umi no Restaurant (1 min. walk)

Enjoy delightful dishes that maximize the flavor of the ingredients while looking at the Seto Inland Sea. The Italian cuisine uses vegetables from our own garden and ingredients from Teshima. Reservations required.



Catering and bento boxes from the island's restaurants

Teshima has a variety of unique places to eat. We can order boxed lunches and catering from various restaurants.  
\*Contents may vary depending on order size and budget.



Island restaurants

Enjoy Teshima's unique and charming dining options. Reservations required.  
\*Reference HP Teshima Tourism Association  
<https://teshima-navi.jp/en/>



Private chefs

Cook together, learn and talk about food and its origins, and enjoy a unique experience with chefs from across the nation.  
\*Content will vary depending on number of people and budget.



Events and other options

At times there are events featuring food cars and original collaborative product events (ex. YOKOO CURRY). You can also bring your own food and enjoy it in the Hall.



## Your Stay at Teshima Espoir Park

Reflect on yourself. Connect with people you meet. Enhance each other's learning.  
We hope that this will be a place remains in the memories of those who visit.

At Teshima Espoir Park, you can spend your time freely. On your own, with friends or associates, as a couple or with your family, or even for overnight training and retreats. You can also use Teshima as a base for visiting other islands. Please feel free to consult with us about training and overnight retreats.

### Sample of a 1 night, 2 day stay

Day 1		Day 2	
12:00	Tour of former industrial site, viewing art, etc.	6:00	Workshop on the rooftop deck while enjoying the morning sun
16:00	Check In Opening ceremony at the Hall	8:00	Breakfast Light meal and coffee from the shop
17:00	Workshop Enjoy the sunset from the rooftop deck	9:00	Workshop Closing ceremony
19:00	Dinner Can be enjoyed with some drinks	10:00	Check Out  End of Sessions
21:30	Round table discussion A time for participants to get to know one another		Free Time Art viewing, lunch, etc.

### Sample of a 2 night, 3 day stay

Day 1		Day 2		Day 3	
AM	Travel to Espoir	7:30	Early morning walk Breakfast	8:30	Breakfast & Session/Activity Closing ceremony while eating breakfast
14:00	Art viewing Enjoy the scenery on a rental bike	10:00	Enjoy art and the island in a rental car	10:00	Check Out
16:30	Check In	13:00	Lunch At one of the island's restaurants		End of Sessions
17:00	Session/Activity Enjoy the sunset from the rooftop deck	15:00	Session/Activity		Free Time Enjoy lunch or visit Naoshima
19:00	Dinner At the restaurant, a time for participants to get to know one another	18:00	Dinner (catering)		
		20:00	Session/Activity Can be used for reflecting on the past sessions		



\*This is a sample schedule

## ■ Espoir Inn Room Rates

Room Type	No. of Rooms	Facilities	Area	Bed Type	Guests	Rate/Room (including tax)	Other Facilities
Single Room	6	Shower, toilet, washbasin	13.8㎡	1 semidouble bed	1	¥13,000~	Desk, chair
Twin Room	1	Bath, toilet, washbasin	26.9㎡	2 semidouble beds	1~2	¥35,000~	Desk, 2 chairs
Double Room	2	Shower, toilet, washbasin	30.6㎡	1 double bed/ 1 extra single bed	1~3	¥30,000~	Table, tatami room
Loft Room 1F	1	Bath, toilet, washbasin	36.2㎡	4 single beds	1~4	¥50,000~	Desk, table, 4 chairs
Loft Room 2F	1	Bath, toilet, washbasin	47.8㎡	4 single beds	1~4	¥60,000~	Large sofa, tatami room

## ■ Inn Facilities, Services and Amenities

Services/Facilities	<ul style="list-style-type: none"> <li>●wi-fi ●no smoking ●no pets ●printer ●laundry ●beverage vending machines ●garden ●rooftop terrace ●parking (with charging stations for electric vehicles)</li> <li>(Espoir Center) ●hall area ●shop</li> </ul>
In Each Room	<ul style="list-style-type: none"> <li>●wi-fi ●bedding ●AC ●refrigerator (excl. dorm type rooms) ●bath towels ●face towels ●bathmat ●sleepwear ●slippers ●hangers</li> <li>●hand and face soap ●shampoo, conditioner, body soap<small>(all in one)</small> ●electric kettle ●cups ●coffee cups ●variety of tea bags</li> <li>●water ●hair dryer</li> </ul>
Rentals/Upon Request	<ul style="list-style-type: none"> <li>●iron ●iron board ●smartphone charger ●scissors ●sewing kit ●nail clipper ●thermometer ●drying rack ●umbrella ●ice pad</li> <li>●masks ●fever cooling sheets ●menstrual products</li> </ul>
For Sale	<ul style="list-style-type: none"> <li>●organic additive-free bamboo toothbrush ●tooth wipes ●organic bamboo hair comb ●cotton pad &amp; swab set ●drawstring bag</li> <li>●basic face care set (cleansing oil, facial cleanser, toner, milky lotion, cream)</li> </ul>

\*We ask for your cooperation in bringing your own amenities.

\*The Hall and shop spaces at Espoir Center are usually open to the general public.

## ■ Espoir Center Rental Space and Service Fees

Room/Service	Overview	Area	Capacity	Fee/3hrs ~ One day (Tax included)
Hall	5 tables, 24 chairs	130m <sup>2</sup>	~ 48	¥50,000 ~ ¥100,000
Special Room	1 dining table, 8 chairs	19m <sup>2</sup>	~ 8	¥20,000 ~ ¥40,000
Kitchen	Kitchen facilities, cookware, plates, cutlery	29m <sup>2</sup>	*please inquire	¥30,000 ~ ¥50,000
Other	2 wireless microphones, 2 speakers, 1 projector, 1 screen, 3 whiteboards	—	—	¥5,000/day
	Bottomless Coffee Service	—	*please inquire	¥1,000/person/day
	Extended hours (21:00-24:00)	—	*please inquire	¥10,000/hour
Entire Building	Entire Building	178m <sup>2</sup>	*please inquire	¥100,000~
	Excluding Kitchen	149m <sup>2</sup>	*please inquire	¥70,000~

\*50% discount is applied from the listed price, if more than half of the group is Teshima residents.

## ■ Facilities/Services/Amenities

Facilities and Services	<input type="checkbox"/> wi-fi <input type="checkbox"/> no-smoking (at Espoir Inn) <input type="checkbox"/> printer <input type="checkbox"/> no pets <input type="checkbox"/> laundry <input type="checkbox"/> garden <input type="checkbox"/> beverage vending machines <input type="checkbox"/> Hall area <input type="checkbox"/> shop <input type="checkbox"/> parking (with charging stations for electric vehicles)
Other	<input type="checkbox"/> microwave <input type="checkbox"/> toaster oven <input type="checkbox"/> electric kettle <input type="checkbox"/> plates <input type="checkbox"/> cutlery

\*The Hall and shop spaces at Espoir Center are usually open to the general public.



## Corporate Overview

Name	Il Grano Corporation
Location	#2003 Lumino Heiwacho 1-1 Heiwacho, Kita Ward, Okayama City, Okayama 700-0827
Representative	Mitsuko Fukutake
URL	<a href="https://il-grano.jp">https://il-grano.jp</a>

We strive to create a place overflowing with hope for the future.

We want the future to be full of hope.

We opened this unique place with this wish in mind.

Teshima is a special place that preserves the original landscape of Japan, rich in nature, and is scattered with art that connects it to the world.

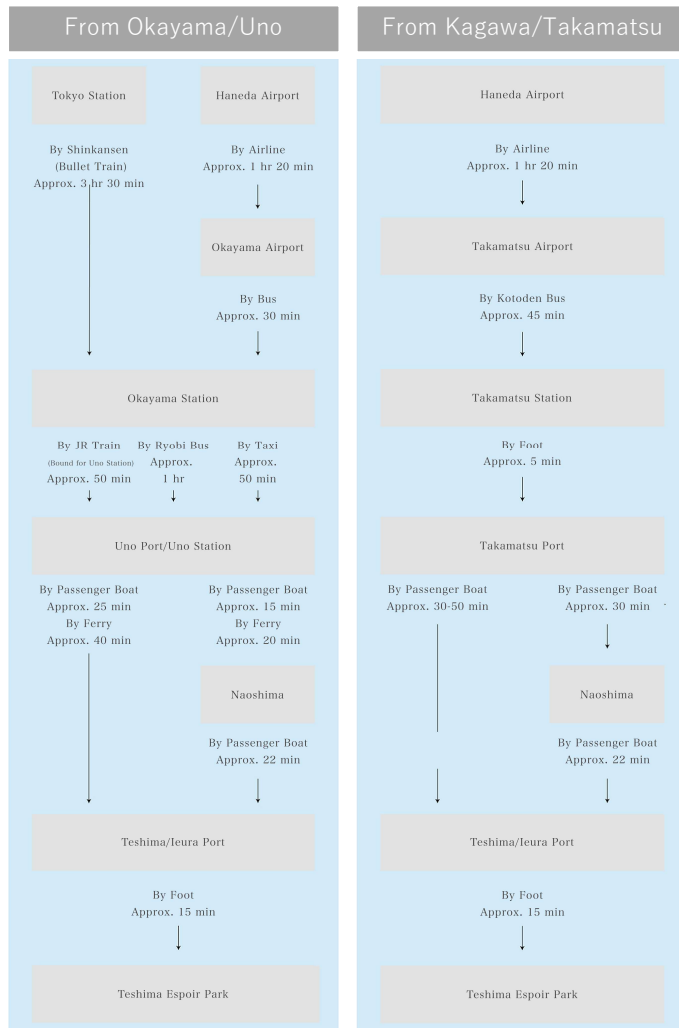
Teshima Espoir Park opened in the fall of 2020 as a place where all visitors can exchange their hopes for the future.

-Representative Director (President) Mitsuko Fukutake

## Facility Overview

Name	Teshima Espoir Park
Location	514 Teshimaieura, Tonosho, Shozu District, Kagawa 761-4661
Site Area	2,278.91㎡
Building Area	729.87㎡
Total Floor Area	751.61㎡
Building	Espoir Inn, Espoir Center, Corridor Building
Access	15 minute walk from leura Port
URL	<a href="https://teshimaespo.com">https://teshimaespo.com</a>
Design	Wada Design Office <a href="http://slow-home.jp">http://slow-home.jp</a>

# Access



## ● From Okayama

From Okayama Station, take a JR train or bus (approx. 1 hour) to Uno Station or Uno Port.  
 → Take a passenger boat (approx. 25 mins) or a ferry (approx. 40 minutes) to Ieura Port.  
 → Walk (approx. 15 mins) from Ieura Port



## ● From Kagawa

From Takamatsu Station, walk (approx. 5 mins) to Takamatsu Port.  
 → Take a passenger ship (approx. 30-50 mins) to Ieura Port.  
 → Walk (approx. 15 mins) from Ieura Port

OR

From Takamatsu Station, walk (approx. 5 mins) to Takamatsu Port.  
 → Take a passenger boat (approx. 30 mins) or ferry (approx. 1 hour) to Miyanoura Port (Naoshima).  
 → Take a passenger boat (approx. 20 mins) from Miyanoura Port to Ieura Port.  
 → Walk (approx. 15 mins) from Ieura Port

\*Service may differ during holiday periods (Golden Week, Obon, year-end holiday season, etc.). For the latest information, please visit the website of each transportation agency.

< For More Information >  
<https://teshima-navi.jp/en/access/>

\*As of January 2023